



FSC® – COC

Operations procedures



Ashish Malik, Senior Vice President & Business Head – Wood
Antoine Briane, Management Representative for the FSC®-COC system

Company Profile

OVERVIEW OF GROUP – HISTORY AND BUSINESS ACTIVITIES

Introduction to the Group

The Olam Group is a leading agricultural business operating from seed to shelf in over 60 countries, supplying food, ingredients, feed, and fibre to over 20,900 customers worldwide. The Group was established in 1989 and is listed on the main board of the Singapore Exchange. It is supported by large shareholders namely, Temasek Holdings, Mitsubishi Corporation, Kewalram Chanrai Group and Olam's management. The Olam Group is the parent entity and the global Headquarters for the group are located in Singapore.

The Olam Group is the principal trading entity for all of Olam's major commodity and product businesses. There are two core operating groups – ofi (Olam Food Ingredients), and Olam Agri. The Olam Group also implements cross-cutting initiatives, such as the platform "AtSource"; drives key enablers such as sustainability and digital transformation; and offers shared services to optimise synergies across the Group.

Olam Agri

Olam Agri is positioned as a global, market-leading food, feed and fibre agri-business that focuses on high-growth emerging markets. Olam Agri's global reach and capabilities, alongside Olam's operational footprint in Africa as well as Asia, positions Olam Agri to meet the growing demand for food staples and feed across these high-growth emerging markets.

Olam Agri has built proprietary and differentiated operating capabilities including, significant strengths in farming, global origination, processing, merchandising, trading, logistics (inland and marine), distribution and risk management that enable Olam to connect farmers and consumers of food, feed, and fibre around the world. The key factors that are shaping this market are:

- Food security focus, rising protein consumption, emerging markets demand, rising technology adoption and sustainability moving to mainstream

Olam Agri is further divided into Food & Feed and Fibre & Ag Services.

- Food & Feed – This includes grains, animal feed & protein, edible oils, and rice.
- Fibre & Ag Services – This includes Cotton, Wood Products, Rubber trading and Commodity Financial Services. Under the commodity financial services, Olam operates a quantitative fund management business and a risk management solutions business.

OUR COMMITMENT TO RESPONSIBLE FOREST MANAGEMENT

Our Environment and Responsible Forest Management initiatives are closely aligned with our core purpose of Growing Responsibly and aimed at making a meaningful social impact in the communities in which we operate. We are committed to the responsible management of our supply chains from farm to customer.

[\(See Annex 1 – Environment and Sustainability Policy\)](#)

Olam Global Agri Pte. Ltd.'s Singapore trading office is a **FSC® COC certified entity**. The certificate only covers the trading activities of Olam Global Agri Pte. Ltd.'s trading office in Switzerland, registered as **Olam Agri Basel AG**. [\(See Part 8. Outsourcing\)](#)

Olam Global Agri Pte. Ltd. also maintains Forestry Management Certificates through its wholly owned company, **La Congolaise Industrielle des Bois (CIB)** in the Republic of Congo.

CIB manages around 2.1 Mha, divided in 4 concessions. [\(See RELEVANT FSC®'S REFERENCES\)](#)
All CIB concessions are FSC®-FM certified.

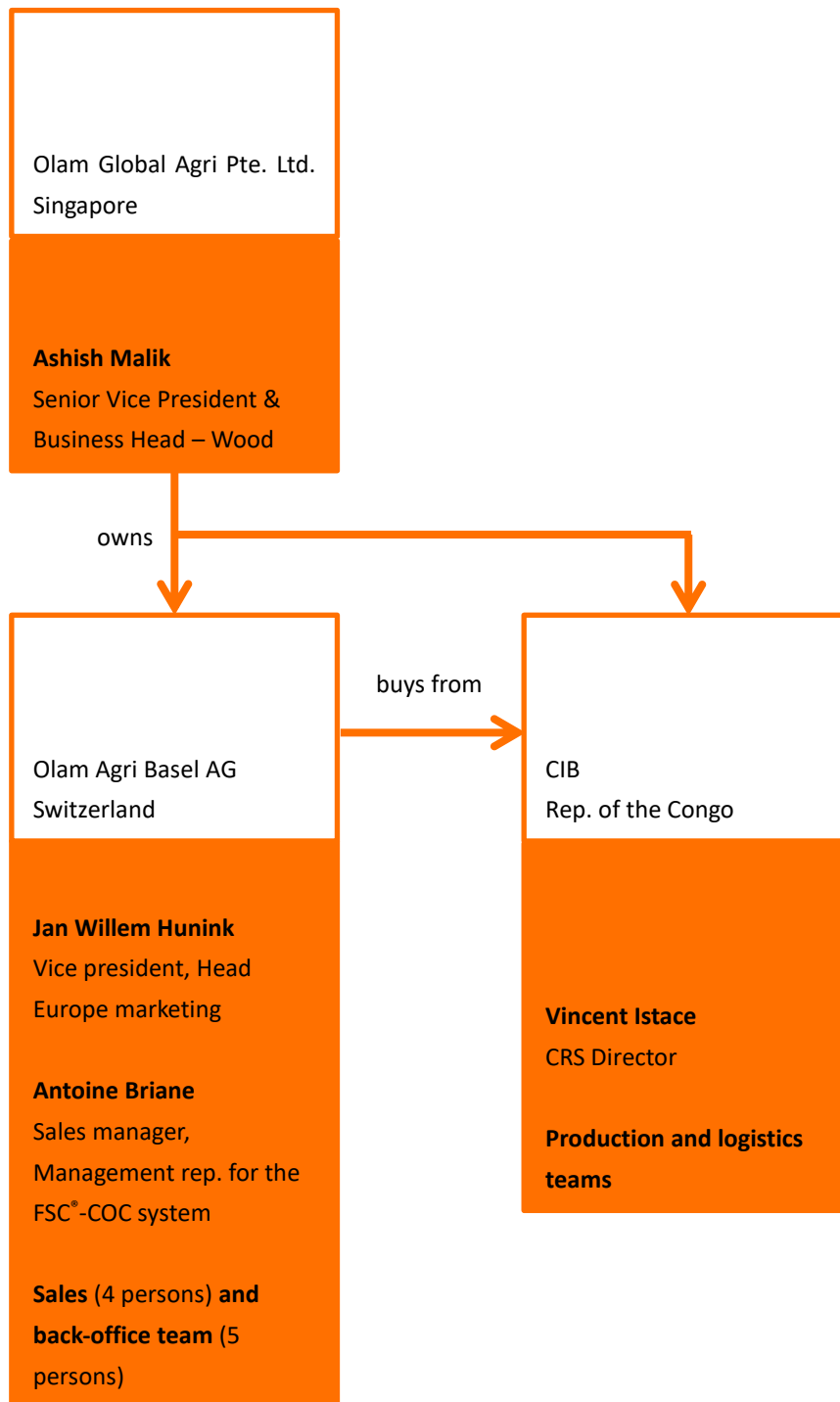
CIB has one production site in Pokola, Sangha department (4 sawmills, kilns, moulding and finger-jointing lines) and one in Enyelle, Likouala department (1 sawmill). Its sawmills are fully supplied by material from its own concessions.

Olam Global Agri Pte. Ltd. also sources materials from third-party sources and is committed to purchasing exclusively FSC® certified materials, [\(See 3RD PARTY SUPPLIERS' REFERENCES\)](#) as well as material coming only from areas that have not resulted from the conversion of natural ecosystems.

Olam Global Agri Pte. Ltd. and its suppliers are also committed to not using wood derived from GMOs.



ORGANISATION CHART



RELEVANT FSC®'S REFERENCES

Olam Global Agri Pte. Ltd.

FSC® Certificate Code	Licence Code	Controlled Wood Code	Validity
SGSHK-COC-002926	FSC-C006439	SGSHK-CW-002926	09/11/2026

Congolaise Industrielle des Bois (CIB)

CIB Chain-Of-Custody

FSC® Certificate Code	Licence Code	Controlled Wood Code	Validity
SGSCH-COC-002697	FSC-C005457	SGSCH-CW-002697	12/10/2025

Pokola

FSC® Certificate Code	Licence Code	Controlled Wood Code	Validity
SGS-FM/COC-004705	FSC-C014998	-	07/02/2023

Kabo

FSC® Certificate Code	Licence Code	Controlled Wood Code	Validity
SGS-FM/COC-010641	FSC-C128941	-	09/02/2026

Loundoungou

FSC® Certificate Code	Licence Code	Controlled Wood Code	Validity
SGS-FM/COC-008483	FSC-C104637	-	09/08/2026

Mimbeli

FSC® Certificate Code	Licence Code	Controlled Wood Code	Validity
SGS-FM/COC-011928	FSC-C156094		25/03/2025

Important remarks on CIB's FSC®-COC management system

Since 2006, CIB has had a third-party audited traceability system in place. This identifies and tracks every product leaving the CIB concessions, so that the buyer can easily identify the origin of the product. The flow of materials is controlled throughout the processes of harvesting, transporting, processing, packaging, and shipping our products. In particular, our chain of custody meets the requirements of the FSC-STD-40-004 chain of custody certification standard and the FSC-STD-COG-02-2020 standard for the certification of forests in the Republic of Congo.

[\(See Annex 17 – CIB's FSC®-COC traceability procedures\)](#)

3RD PARTY SUPPLIERS' REFERENCES

Société de Mise en Valeurs des Bois (SOMIVAB, GABON)

FSC® Certificate Code	Licence Code	Validity	Products type	FSC category
CU-COC-861819	FSC-C084418	21/03/2025	Sawn timber	FSC 100%

Precious Wood (CEB, GABON)

FSC® Certificate Code	Licence Code	Validity	Products type	FSC category
BV-COC-840169	FSC-C021473	10/10/2023	Sawn timber	FSC 100%

Chanzy Bois (GABON)

FSC® Certificate Code	Licence Code	Validity	Products type	FSC category
BV-COC-879693	C005355	30/11/2023	Sawn timber	FSC 100%

Sustainable Forestry Products SA (SFP, GABON)

FSC® Certificate Code	Licence Code	Validity	Products type	FSC category
BV-COC-131535	C131535	07/08/2026	Sawn timber	FSC 100%

Suppliers' certificates validity will be controlled by the management representative **at least once a year**, one month before the audit date. It is also of its responsibility to update it, should it change before the annual control date.

MANAGEMENT OF THE MULTISITE SCHEME

Olam Global Agri Pte. Ltd. is covered by the FSC® Multisite standard (FSC-STD-40-003 V2-1).

The following table lists the participating sites covered by the scope.

Site details	Type of site	Date of entry	Date of withdrawal	Site activity	Contact details
Olam Agri Basel AG Aeschengraben 6 4054 Basel, Switzerland	Central	11/10/2016	-	Trader	Antoine Briane antoine.briane@olamagri.com
Olam Global Agri Pte. Ltd. 7 Straits View, Marina One East Tower, #20-01, Singapore 018936	Other	11/10/2016	-	HQ	Ashish Malik ashish.malik@olamagri.com represented by: Antoine Briane antoine.briane@olamagri.com

IMPORTANT REMARKS

According to FSC®'s standard, it's the certification body – SGS Singapore – that is auditing and verifying the various sites on both internal and external compliance.

In the event of addition of a new site, Olam's representative would have to inform the certification body to make sure the site is compliant with the current FSC-COC certificate standards.

In the event of removal of a registered site, Olam's representative would have to inform the certification body within 3 working days.

In compliance with FSC® Multisite standard (FSC-STD-40-003 V2-1), item 5.1.4.a.viii), the participating sites will issue a signed a declaration stating that no material has been FSC labelled, sourced as controlled material, or sold as FSC certified or FSC Controlled Wood since the last Central Office's audit (according to clause 5.3.2 b).

For logistical reasons, this declaration will be kept on the central site (Olam Agri Basel AG, Basel, Switzerland).

FSC®-COC OBJECTIVE

To meet FSC® standards, maintain customers' rights, support environmental protection & responsible forest management

Olam is fully committed to comply with the values of FSC® as defined in the "Policy for the Association of Organizations with FSC® (FSC®-POL-01-004, initially approved in July 2009). This is actively practiced through its actions by maintaining FM and CoC Certifications.

In addition, Olam Global Agri Pte. Ltd. is actively involved in FSC® decision making, being a **FSC® member in the Economic Chamber.**

Olam implements the necessary measures to continuously ensure we are not directly or indirectly involved in the following activities:

- Illegal Logging or the trade in illegal wood or forestry products
- Violation of traditional and human rights in forestry operations
- Destruction of high conservation values in forestry operations
- Significant conversion of forests to plantations or non-forest use
- Introduction of genetically modified organisms in forestry operations
- Violation of any of the ILO Core Conventions, as defined in the ILO Declaration on Fundamental Principles and Rights at Work, 1998

Olam is also fully committed to occupational health and safety. The MATS Department oversees setting and implementing Health & Safety policies within the Olam Global Agri Pte. Ltd. Group. Please refer to Website <http://www.olamconnect.com/mats/default.aspx> to learn more about their role.

[\(See Annex 2 – Health and Safety Policy\)](#)

Note: there is strictly no physical handling of the products by Olam's Singapore office.

TABLE OF CONTENTS

FSC® – COC.....	1
OPERATIONS PROCEDURES.....	1
Company Profile	2
Overview of Group – History and business activities.....	2
Introduction to the Group	2
Olam Global Agri Segment.....	2
Our commitment to responsible forest management	3
Organization chart.....	4
Relevant FSC®’s references.....	5
3 rd party suppliers’ references.....	6
Management of the multisite scheme	7
Important remarks	7
FSC®-COC Objective	8
Amendments table.....	11
1. Purpose of the handbook	13
2. Scope of the Handbook	13
3. Olam Global Agri Pte. Ltd. COC Supply Chain Process Scenarios	14
3.1. First Scenario	14
3.2. Second Scenario:	15
3.3. Third Scenario.....	15
4. Organization Structure and Management Responsibilities.....	17
4.1. Responsibilities of the Company’s Management Representative	17
Contact details	18
4.2. Responsibilities of the Timber Department Management	18
4.3. Responsibilities of the Marketing Department.....	18
4.4. Responsibilities of the Documentation / Operations Department.....	18
4.5. Responsibilities of our independent agents	19
5. Identification of Critical Control Points, Risk Assessment and controls	20
5.1. Supplier verification.....	24
5.2. Customer verification	24
5.3. Controls on Purchase and Sales Contracts for FSC® certified products.....	25
5.4. Controls on Shipping Documentation:.....	26
5.5. Sales Invoice	27
5.6. Conversion factors.....	28
5.7. Issues relative to verification of Critical Control Points: Complaints	29
5.8. Issues relative to verification of Critical Control Points: Non-compliance.....	29
6. FSC®-CoC Logo Usage and Protection.....	30
7. Records & Registers	31
8. Outsourcing.....	32

List of outsourcing partnerships.....	32
9. FSC Core Labour requirements and policy of association	33
10. Training	34
Annexes	35
Annex 1 Olam Global Agri Pte. Ltd.'s Environment and Sustainability Policy	36
Annex 2 Olam Global Agri Pte. Ltd.'s Health and Safety Policy	37
Annex 3 Letter of Authorization	38
Annex 4 FSC® Product Group List	39
Annex 5 Supplier verification through www.fsc.info.org.....	40
Annex 6 Example of a purchase contract FSC® Material	41
Annex 7 Example of a sales contract FSC® Material	42
Annex 8 Example of a purchase invoice FSC® Material	43
Annex 9 Example of a Bill of Lading.....	44
Annex 10 Example of a Packing List / Specifications	45
Annex 11 Example of a Phyto-sanitary Certificate.....	46
Annex 12 Example of a Sales invoice FSC® Material “FSC 100% claim”	47
Annex 13 FSC® Logo use report form	48
Annex 14 Chain of Custody Certification Outsourcing Agreement Example	49
Annex 15 Self-declaration regarding FSC-POL-01-004	50
Annex 16 Attendance Sheet – CoC Certification training Report	51
Annex 17 CIB’s FSC®-COC traceability procedures.....	52

AMENDMENTS TABLE

Last Revision	Change Summary
10/06/2013	Conversion factors (Metric Tons); p. 22 Update on training; p. 26-27 New product Group List (as per SGS Format); p. 32
29/10/2013	Letter Of Authorization (Annex 3); p. 31
01/10/2015	Addition of 3 rd party suppliers FSC® references; p. 3 and p. 126 Correction of conversions factors p. 23
26/09/2016	Update of CIB's FSC® references; p. 3 Addition of 3 rd party supplier FSC references; p. 4
10/10/2016	Modification of appointment letter; p. 31
15/12/2016	Correction of outdated terminology; all report Modification of 3 rd party supplier list; p4 Addition of important remark concerning the use of FSC® Nos; p. 16 Modification of the outsourcing description; p. 27
09/01/2017	Modification of certificate validity; p. 3
13/06/2017	Addition of Mimbeli-Ibenga/Likouala forest concessions references; p. 3
04/07/2017	Update on training; p. 28
30/11/2017	Addition of the name Antoine Briane – tt Timber International AG name; p. 1
05/12/2017	Addition of a note on the frequency of the control of suppliers' FSC® certificates validity date; p. 16 Modification of the subsection 5.6. relative to complaints; p. 25 Addition of the subsection 5.7. relative to non-compliance reports; p. 25 Addition of a note on the use of the FSC® label use; p. 26 Removal of annexes 5 and 6 Modification of the outdated terminology; all over the report
18/12/2017	Update of Olam Singapore's address; p. 5 Update of terminology; p. 22 Addition of new products in the scope; p. 41 to 44, 74 to 77, 96 to 99 Update of invoice's example in annex 12; p. 123
04/01/2018	Update of terminology; p. 22
22/01/2018	Update of training; p. 28
04/12/2018	Addition of an organization chart; p.3
07/01/2019	Update of the Management Representative for the FSC®-COC system; p. 1, 13, and annex 3; p.33
07/01/2019	Update of the FSC® Product Group List, p. 34
16/01/2019	Addition of paragraph 5.2. "Customer verification", p. 20
08/04/2019	Addition of paragraph "FSC COC certificate", p.6 Removal of paragraph "Contact details", p. 6

17/10/2019	<p>Removal of chapter 10 (on approval and revision of procedure) due to repetition</p> <p>Modification of chapter 8 and addition of “List of outsourcing partnerships” table, p. 31</p> <p>Modification of paragraph “management of the multisite scheme”, p. 4</p> <p>Addition of a “list of participating sites” table, p. 7</p> <p>Addition of details regarding Management Rep. responsibilities, last paragraph of part 4, p. 16</p> <p>Update on terminology</p>
02/06/2020	Update of FSC Certificate codes, p. 4
18/08/2020	Update of FSC Certificate codes, various pages
12/11/2020	<p>Update of Supplier’s FSC Certificate code, various p. 5</p> <p>Update in terminology, p. 1 and footer</p>
27/08/2021	Update of FSC Certificate codes, p. 4
05/05/2022	<p>Replacement of the company name to Olam Global Agri Pte. Ltd.</p> <p>Removal of Annexes 14 and 15</p> <p>Update of FSC Certificate codes, p. 4</p> <p>Update of Annexes examples, p. 50 to 57</p> <p>Update of FSC product group list, p. 40</p> <p>Modification of the company profile, p. 2</p> <p>General updates according to Olam’s new brand policy (fonts, etc.)</p> <p>Addition of paragraph 9. on FSC Core Labour requirement and policy of association, p. 34</p>
14/12/2022	<p>Removal of outsourcing site, p. 33</p> <p>Modification of the “Training” chapter, p. 35</p> <p>Update of species list, p. 40</p> <p>Change of tt Timber International AG name to Olam Agri Basel AG</p>
04.06.2023	<p>Removal of date of validity, p. 1</p> <p>Update of names, p. 1, 3 and 7</p> <p>Addition of information on CIB and third-party activities, p. 3 and 6</p> <p>Addition of Annex 17 (CIB FSC®-COC management system)</p> <p>Addition of information on Olam Commitment, p. 3</p>

1. Purpose of the handbook

The purpose of this handbook is:

- To ensure the current documentation process control systems meet FSC®-COC requirements
- To make sure that our FSC® marked products coming from the FM certified sources comply with the Chain of Custody requirement mandated by the FSC® Standard
- The process control system is also made ready to identify and trace the entire chain of custody as and when required for any internal or external audit
- To ensure all Participating Sites under the scope of certificate are aware of Olam Global Agri Pte. Ltd. policy and procedure regarding FSC®-COC requirements

2. Scope of the Handbook

The scope of this handbook is:

- Outlining Olam Global Agri Pte. Ltd., Singapore's office's documents control processes related to the FSC®-COC standard and maintaining FSC® products claims through the process of transfer of ownership in Purchase and Sale of FSC® Certified products
- Outlining the responsibilities and fixing accountability for each step of traceability in the Chain of Custody control process
- Detailing FSC® product groups for all products that will be purchased and sold
- Defining the Chain-of-Custody System applicable to our trading activities



3. Olam Global Agri Pte. Ltd. COC Supply Chain Process

Scenarios

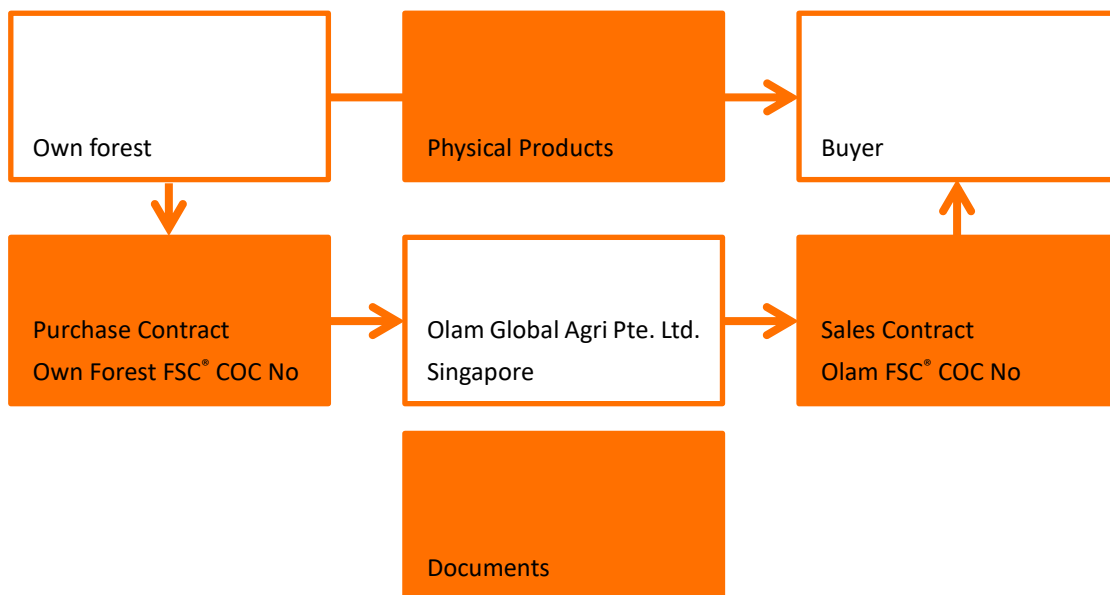
Olam Global Agri Pte. Ltd. only uses the transfer system, as described in FSC Standard for Chain of Custody certification – FSC-STD-40-004 V2-1).

We identified three potential Scenarios with reference to Supply Chains that would involve Olam Global Agri Pte. Ltd.'s COC Certificate under the Transfer System.

Note: Transfer System is a Chain of Custody system applied at the product group level, which allows outputs to be sold with an FSC® claim that is identical to the material category. In this case there will be no handling of physical products.

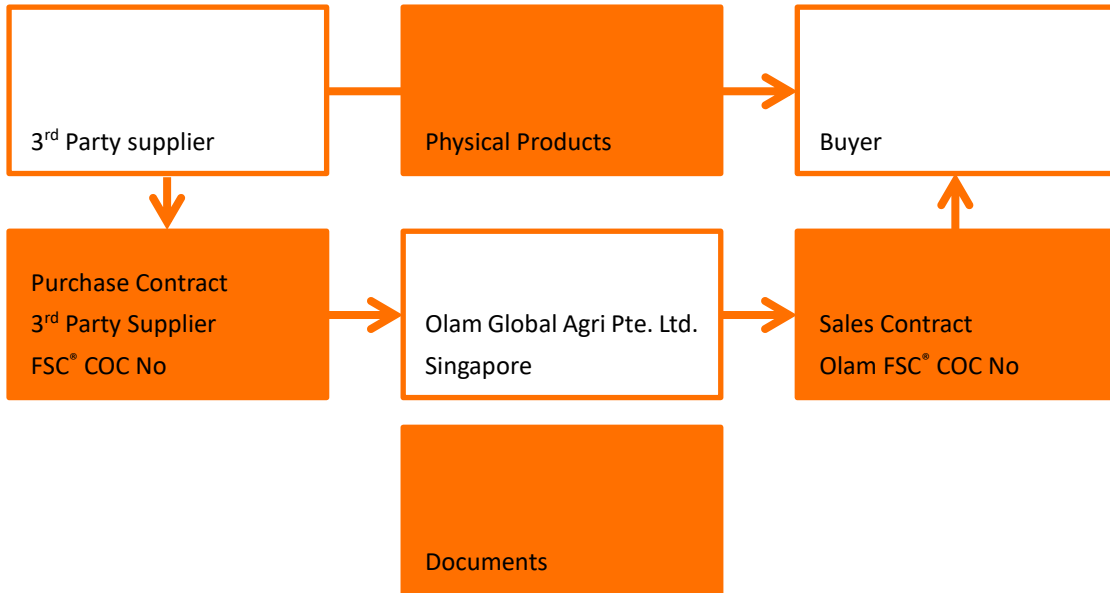
3.1. First Scenario

Own FSC® FM Certified Forest → Olam Global Agri Pte. Ltd. → Buyer.



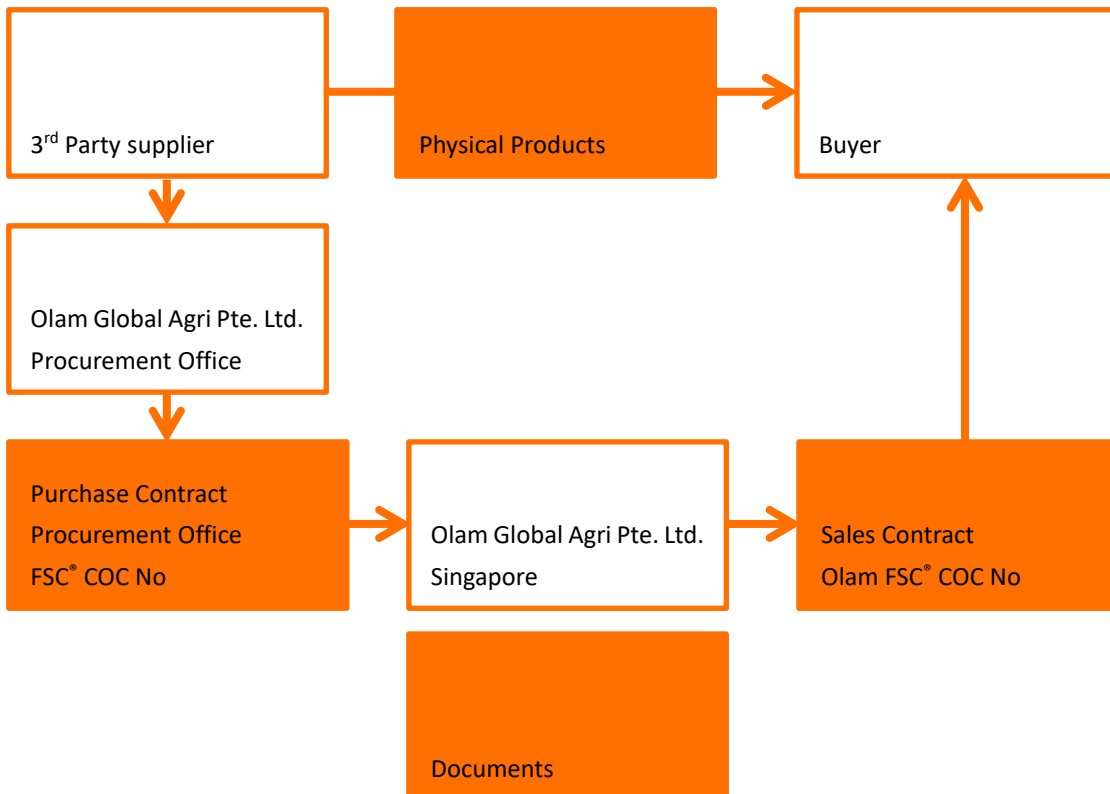
3.2. Second Scenario:

3rd Party FSC[®] Supplier → Olam Global Agri Pte. Ltd. → Buyer



3.3. Third Scenario

3rd Party FSC[®] Supplier → Olam Global Agri Pte. Ltd. Procurement Office → Olam Global Agri Pte. Ltd. → Buyer



The Transfer System is used for Olam Global Agri Pte. Ltd. trading activities. All original FSC® claims are transferred as is to buyer/end user.

As such, we could transfer following FSC claims:

- FSC® 100% product groups
- FSC® Controlled Wood product groups

In this scheme, it is important to note that there is strictly no transfer of ownership and no introduction of new material inputs, even in cases where production/processing of the cargo is undertaken during the process of transport to the end buyer. (Where processing itself will be outsourced)

4. Organization Structure and Management Responsibilities

As responsible forest management is an important part of Olam environmental policy, issues regarding certification have the support of senior management and supervisory board. Group wide sustainability issues are overseen by the CRS Board and CRS executive committees, which includes Olam Global Agri Pte. Ltd.'s president and global head for the wood division.

(More information on: <http://olamgroup.com/sustainability/governance/>)

Antoine Briane has been appointed as Olam Global Agri Pte. Ltd.'s Management Representative for the FSC®-Chain of Custody System.

[\(See Annex 3 – Authorization Letter\)](#)

Management Representative should keep Olam Global Agri Pte. Ltd.'s Management informed after each audit and in case of any major changes in the scheme.

4.1. Responsibilities of the Company's Management Representative

Olam Global Agri Pte. Ltd.'s Management Representative's responsibilities are:

- a) Overall responsibility for Singapore's office and related contractors/agents' compliance with all applicable requirements of this standard
- b) Set up, implement, and maintain procedures and/or work instructions covering all applicable requirements of this standard
- c) Establish a FSC® Product Groups List for all products that will be sold with FSC® claims which will define the scope of the FSC® certificate and ensure this list is publicly available and always kept dating. This list shall consist of the following information:
 - a. Specification of the product group as FSC® 100%, FSC® Controlled Wood
 - b. Product Type(s) according to the FSC® product classification
 - c. Species (scientific and common names)

Note: to ensure correct scientific and common names are used, our company will follow the available nomenclature of the Germplasm Resources Information Network (GRIN) Taxonomy Species Online Database (<http://www.ars-grin.gov/cgi-bin/npgs/h®I/index.pl>).

Products not listed in this product group list cannot be sold as FSC® certified products. In case Product Groups need to be added, Olam Global Agri Pte. Ltd. shall contact and get approval from FSC® Certification body prior to sales. Any changes are therefore subject to approval from the Auditor who will authorize as well to insert the same on the FSC® Website.

[\(See Annex 4 – Olam Global Agri Pte. Ltd. FSC® Product Group List\)](#)

- d) Identify training needs and subsequently organise training sessions, according to the following training plan: arrange training sessions at least once a year

- e) Conduct regular internal audits through random spot checks by checking the relevant departments to ensure the procedures are implemented and maintained as outlined in this document
- f) Keep an updated database of Olam Global Agri Pte. Ltd.'s FSC® certified suppliers in which the following records would be maintained:
 - a. Supplied product type
 - b. Supplied material category
 - c. Supplied FSC®-COC or FSC®-CW code (if applicable)
 - d. Validity of the certificate at the time of the purchase contract

CONTACT DETAILS

Site	Contact	Address	Tel/Fax/Email
Olam Agri Basel AG	Antoine Briane	Aeschengraben 6 4051 Basel Switzerland	T: +41 (0)61 205 3940

4.2. Responsibilities of the Timber Department Management

The department is responsible for the development and implementation of the FSC®-COC system across relevant functions, making sure that the system adheres to the FSC® standard and complying with the requirements of relevant laws and regulation governing FSC® Certified trade.

4.3. Responsibilities of the Marketing Department

The marketing team is responsible for the marketing of FSC® certified products, identification of COC status and for ensuring that Certificate number is mentioned on relevant Sales Documents. The marketing Department shall also closely monitor the usage of FSC® Trademark. The marketing offices never take legal ownership of the cargos. If such cases occur in future, they would obtain their own COC certification and handle such cargoes according to their own procedure and outside the scope of this standard.

4.4. Responsibilities of the Documentation / Operations Department

This department ensures the FSC® standards are always adhered to and daily following the established procedure and making sure there is no breach in the COC Supply Chain Process. All relevant employees within the organization shall demonstrate awareness of the organization procedures and competence in implementing the organization's Chain of Custody management system.

4.5. Responsibilities of our independent agents

Olam Global Agri Pte. Ltd., Singapore will on some occasion outsource part of the work process to independent agents. There will be strictly no transfer of legal ownership and the outsourced process will remain within the scope of Olam Global Agri Pte. Ltd.'s FSC®-COC certificate. However, the independent agents shall set up and maintain a documentation control system with explicit procedures for the outsourced process that are shared with Olam Global Agri Pte. Ltd.'s FSC®-COC Certificate and ensure they maintain traceability of FSC® certified material and paper trails. (Through records of inputs, outputs and delivery documentation associated with all FSC®-certified material which is processed under the outsourcing contract agreement)

5. Identification of Critical Control Points, Risk Assessment, and controls

Important remark

It is important to keep in mind that:

- In case of FSC® 100% contracts it is the FSC®-COC No that should appear where required,
- In case of FSC® Controlled Wood contracts it is the FSC®-CW No that should appear where required,
- In case of Non-FSC® contracts, No FSC®-COC No nor FSC®-CW No should appear.

CCPs	Risk Assessment	Controls
Suppliers Identification	<p>Risk:</p> <ul style="list-style-type: none"> – Supplier might be no longer certified – Certificate might not be valid or terminated – Supplier might make false Claim <p>Low risk</p>	<ul style="list-style-type: none"> – Carefully monitor the validity of supplier certificate on www.info.fsc.org – Check FSC® Certificate – Verify Scope
Purchase Orders Purchase Contract Purchase Invoice Shipping Documents	<p>Risk:</p> <ul style="list-style-type: none"> – Supplied quantities and quality differ from shipping documentation – Product Group (FSC® 100%, FSC® Controlled Wood) or FSC®-COC No or FSC®-CW No might be incorrectly used in the Purchase order/Purchase invoice or shipping documents – Product Group (FSC® 100%, FSC® Controlled Wood) or FSC®-COC No or FSC®-CW No might not appear on purchase documents which might lead to a potential breach in the Chain of Custody <p>Medium risk</p>	<ul style="list-style-type: none"> – On Purchase Contracts: <ul style="list-style-type: none"> ▪ FSC®-COC No from FSC® supplier or FSC®-CW No. ▪ Product Group (FSC® 100%, FSC® Controlled Wood) – On Purchase Invoices: <ul style="list-style-type: none"> ▪ Supplied quantities and quality shall be in compliance with the supplied documentation ▪ FSC®-COC No from FSC® supplier or FSC®-CW No. ▪ Product Group (FSC® 100%, FSC® Controlled Wood) – On shipping documentation:

		<ul style="list-style-type: none"> ▪ Supplied quantities and quality in compliance with the purchase invoice ▪ Log List records with batch code for logs and packing list record with bundles code for sawn timber – Link between shipping documents for shall be clearly identified and verified (through common references like contract No)
Sales Orders	<p>Risk:</p> <ul style="list-style-type: none"> – Olam Global Agri Pte. Ltd.'s FSC®-COC No. or Olam Global Agri Pte. Ltd.'s FSC®-CW No. might not appear or be misused on sales invoice/contract (ex: FSC® Pure instead of FSC® 100%) – Product Group (FSC® 100%, FSC® Controlled Wood might not be specified on sales invoice/contract – FSC®-COC No from FSC® supplier or FSC®-CW might incorrectly appear on sales invoice/contract in case of non FSC® Outputs – Product Group (FSC® 100%, FSC® Controlled Wood might be incorrectly quoted on sales invoice/contract in case of non FSC® Outputs <p>Medium risk</p>	<ul style="list-style-type: none"> – In case of verified FSC®-certified material, Sales contract/Sales invoices shall imperatively quote: <ul style="list-style-type: none"> ▪ Olam Global Agri Pte. Ltd.'s FSC®-COC No. (SGSHK-COC-0002926) or Olam Global Agri Pte. Ltd.'s FSC®-CW No.(SGSHK-CW-002926) ▪ Product Group (FSC® 100%, FSC® Controlled Wood) <p>Note: The certification claim shall strictly match the one indicated on Purchase contract and Purchase invoice.</p> <p>Note: However, in case material is not FSC certified, there shall not be any reference of any kind of the FSC®-COC/CW Nos and FSC® claims in the sales contract/invoice</p>
Document and record control	<p>Risk:</p> <ul style="list-style-type: none"> – Evidence of adherence to FSC®-COC procedure through the process cannot be made without an efficient document and record control system <p>Medium risk</p>	<ul style="list-style-type: none"> – Monitor and control constantly documents and maintain record control system

		<ul style="list-style-type: none"> - Adherence to this document and record control system is done once a month by the FSC-CoC Management Representative though random spot checks on registers and records - All documentation/records for any FSC® based orders shall be retained for a period of five (5) years
<p>FSC COC system documentation</p>	<p>Risk:</p> <ul style="list-style-type: none"> - FSC®-COC system in place is no longer valid or representative of Olam Global Agri Pte. Ltd.'s activities. - Olam Global Agri Pte. Ltd. might not comply with the FSC®-COC standard anymore. - Changes might arise such as: <ul style="list-style-type: none"> ▪ Transfer System might be no longer valid ▪ Certificate Scope has changed (Product Group List/Categories/Claims/Species...) ▪ New Outsourced Entities have been brought in under Olam Global Agri Pte. Ltd.'s FSC®-COC Certificate <p>Medium risk</p>	<ul style="list-style-type: none"> - The FSC®-COC representative shall frequently verify if there have been any updates for the FSC® website. In such case, he would ensure any changes are implemented and that Department Heads for Wood Products in Singapore are informed accordingly. Where necessary, further training would be provided.

<p>Conversion factors for Volume Controls</p>	<p>Risk:</p> <ul style="list-style-type: none"> – Purchased volume/weight might not correspond to sales volume/weight – There might be a lack of transparency/understanding in the way changes of material volume or weight are calculated <p>Medium risk</p>	<ul style="list-style-type: none"> – The organization has identified the main processing steps involving a change of material volume or weight due to conversion from one measuring methodology to another. This document specifies the conversion factor for the steps involved and provides a documented methodology to calculate the conversion factors in a transparent way. – Any new conversion factor shall be inserted to this procedure.
<p>Labelling and Logo Approval</p>	<p>Risk:</p> <ul style="list-style-type: none"> – There might be an infringement to the FSC®-STD-50-001 V2-0 regarding the use of the logo and trademark. <p>Medium risk</p>	<ul style="list-style-type: none"> – Olam Global Agri Pte. Ltd. will establish and maintain an up to date a register of all the Logo/Trademark use for on/off products. – The FSC®-CoC Management Representative will oversee use of logo/trademark and ensure it always complies with the standard FSC®-STD-50-001 V2.0. – No logo/trademark use can take place without approval from the Management Representative and prior to any FSC® logo/trademark use, the Management Representative shall always seek approval from a FSC® accredited certification body.

<p>Sales of stock / shipped and unsold FSC® certified material</p>	<p>Risk:</p> <ul style="list-style-type: none"> – In case of shipped and unsold/stored material. there might be an increased risk in mixing up FSC® material with non-FSC® material (due to gap in time between purchase and sale) <p>Medium risk</p>	<ul style="list-style-type: none"> – Monitor closely purchase documents and stock status by regularly printing stock reports for FSC® Material – If purchase consists of FSC® certified material, sales shall consist of FSC® certified material too, adhering to all FSC® requirements – If sold non-certified, Labels on cargo shall be removed and it shall not be mentioned in sales documentation anything related to FSC® outputs (as not applicable)
---	---	--

Below are details of the controls we apply to mitigate the above identified risks. These have been established by OLAM Global Agri Pte. Ltd. both at the Head Office and at the Marketing office(s) to mitigate the risks of mixing certified and non-certified products.

5.1. Supplier verification

Supplier may not be delivering FSC® material with valid claim.

Supplier verification is therefore required:

The supplier of FSC®-COC products will be a holder of either a FSC®-FM or/and a FSC®-COC Certificate. Validity and status of the FSC® Certificates can be checked on the FSC® Website: <http://info.fsc.org/>

It is the only credible source of information for the status and validity of FSC® certificates and Olam Global Agri Pte. Ltd. shall verify the validity and scope of the supplier’s FSC® certificate for any changes that might affect the availability and authenticity of the supplied products. The above shall be checked systematically to ensure the Chain of Custody is maintained when buying FSC® materials from a supplier.

An up-to-date record of all FSC® suppliers who are supplying material used for FSC® product groups shall be established and maintained

www.fsc.info.org – Congolaise Industrielle des Bois

5.2. Customer verification

Sales and back-office teams shall always control whether the FSC-COC or FSC-CW certificate of

their customer is valid before issuing a sales contract. To do so, they shall use an up-to-date list of their customers and their certificate (list available on the local network). Management Representative for the FSC®-COC system is responsible for keeping this list up to date. FSC's trademark portal (<https://trademarkportal.fsc.org/portal/login.php>) shall also be used to maintain this list up to date.

5.3. Controls on Purchase and Sales Contracts for FSC® certified products

Olam Global Agri Pte. Ltd. requires at least the following basic information on all the **purchase** contracts:

- Name and contact details of the organization
- Name and address of the supplier
- Date when the document was issued
- Contract no.
- Product type and material category
- Marks & no. (As and when required/possible)
- Serial numbers(As and when required/possible)
- Specifications
- Volume / Quantity of the product sold
- Units and unit price

Before any FSC® purchase contract can be issued the following shall be verified:

- The FSC®-COC No or FSC®-CW No from supplier shall be indicated on all contracts for FSC® material
- Product Group must clearly be stated on all contracts: FSC® 100% / FSC® Controlled Wood
- Following text must also appear:

Product group from well-managed forests, produced in conformity with the Principles and Criteria of the Forest Stewardship Council and other controlled sources.

(See Annex 6 – Example of a purchase contract FSC® Material)

The **sales contract** shall indicate the following basic information:

- Name and contact details of the selling entity
- Name and address of the Buyer
- Date of the document
- Contract no.
- Product type and material category

- Marks & no. (As and when required/possible)
- Serial numbers (As and when required/possible)
- Specifications
- Volume / Quantity of the product sold
- Units and unit price

Before any sales contract is issued, the below points shall be verified:

- The Olam Global Agri Pte. Ltd. FSC®-COC Registration Code: SGSHK-COC-002926 in the case of the sale of FSC® 100% products shall appear

or

- The Olam Global Agri Pte. Ltd. FSC® Controlled Wood Code: SGSHK-CW-002926 in the case of the sale of FSC® Controlled Wood products shall appear
- The claim “FSC® 100%” for products from FSC® 100% product groups shall appear
- The claim “FSC® Controlled Wood” for FSC® Controlled Wood product shall appear

[\(See Annex 7 – Example of a sales contract FSC® Material\)](#)

5.4. Controls on Shipping Documentation:

When material is shipped, the Operations Department (both in the Head Office and in marketing offices) shall receive the following documentation from Supplier/Agent/Procurement Entity... in origin:

- Specifications / Packing List from origin
- Commercial Invoice from Supplier
- Bill of Lading
- Phyto-sanitary Certificate / Fumigation Certificate
- Certificate of origin

Documentation shall be checked as per below.

The **Supplier/Origin Commercial Invoice** shall bear:

- The FSC®-COC or FSC®-CW Certificate No from supplier as well as validity date of the corresponding certificate
- The Product Group: FSC® 100% / FSC® Controlled Wood.
- The FSC® text must be also shown:
Product group from well-managed forests, produced in conformity with the Principles and Criteria of the Forest Stewardship Council and other controlled sources

[\(See Annex 8 - Example of a purchase invoice FSC® Material\)](#)

The **Bill of Lading/Specifications/Packing list** shall bear:

- The specifications /packing list must indicate:
- The FSC®-COC or FSC®-CW Certificate No from supplier as well as validity date of the corresponding certificate
- The Product Group: FSC® 100% / FSC® Controlled Wood
- The FSC® text must be also shown:

Product group from well-managed forests, produced in conformity with the Principles and Criteria of the Forest Stewardship Council and other controlled sources.

Both the **Bill of Lading and Specifications/Packing List** shall be clearly **linked** by a common reference (ex: state the contract no. from origin as a common reference that would link the documentation and therefore cargo is fully identified and traceable.)

Note: The Certificate of Origin and Phyto-Sanitary Certificate are also linked to other documents through origin contract no.

[\(See Annex 9 – Example of a Bill of Lading / Annex 10 – Example of a Packing List-Specifications / Annex 11 – Example of a Phyto-sanitary certificate\)](#)

5.5. Sales Invoice

Given the fact all these checks are duly completed and successful and no breach in the Chain of Custody is found, we shall then issue a **Sales invoice** outputs sold with FSC® claims including the following information:

- Name and contact details of the organization
- Name and address of the customer
- Date when the document was issued
- Contract no.
- Product type and material category
- Marks & no. (As and when required/possible)
- Serial numbers(As and when required/possible)
- Specifications
- Volume
- Units and unit price

Operations Department will ensure that delivered FSC® quantities match with the quantities on the corresponding supplier invoice.

The **Sales invoice** shall additionally state for outputs with FSC® claims:

- The Olam Global Agri Pte. Ltd. FSC®-COC Registration Code: SGSHK-COC-002926 in the case of the sale of FSC® 100% products
- or
- The Olam Global Agri Pte. Ltd. FSC® Controlled Wood Code: SGSHK-CW-002926 in the case of the sale of FSC® Controlled Wood products
 - The claim “FSC® 100%” for products from FSC® 100% product groups
 - The claim “FSC® Controlled Wood” for FSC® Controlled Wood product

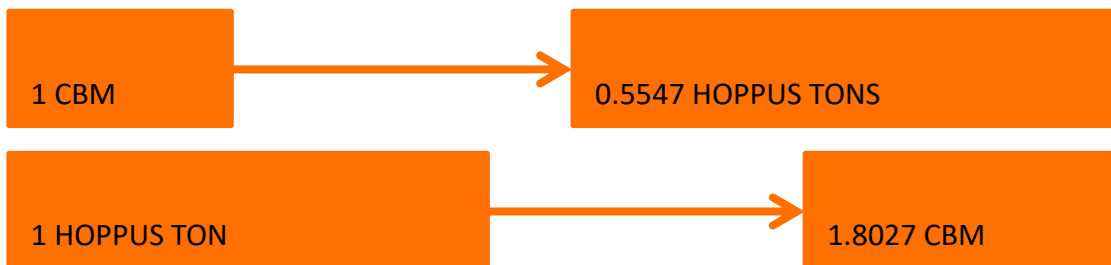
Important Note: if the output is sold FSC® certified, the claim shall be identical as on the purchase invoice as OLAM Global Agri Pte. Ltd. uses the transfer system.

The product sold shall be therefore clearly identified as FSC® certified material on the invoice. [\(Annex 12 – Example of a Sales invoice FSC® Material with claim “FSC 100% claim”\)](#)

5.6. Conversion factors

Olam Global Agri Pte. Ltd. has identified certain conversion factors for use in cases where the measurement methodology is changed. The conversion factors are set as follows:

Equivalence cbm and Hoppus Tons for all Products Group



Purchase in cbm / sales in Metric Tons for Ebony Specie ONLY (Scientific Name: Diospyros Crassiflora/119a)

Olam Global Agri Pte. Ltd. will purchase Ebony wood product based on the volume in cubic meters as per usual. However, whenever sale is agreed in sales contract in Metric Ton unit, Olam Global Agri Pte. Ltd. will base the sales calculation on actual statistic weight value indicated on the **specification** received from supplier and this value will be the only source allowed for the sale quantity.

These conversions factors shall be revised on regular basis and kept up-to date.

Olam Global Agri Pte. Ltd. will ensure to identify new conversion factors for new trade lines or new requirements.

5.7. Issues relative to verification of Critical Control Points:

Complaints

In the event of a complaint is received regarding the organization's conformity to the requirements applicable to the scope of Olam Global Agri Pte. Ltd.'s CoC certificate, the management representative should be immediately informed. This person shall then ensure that the complaints are adequately considered, including the following:

- a) Acknowledge receipt of the complaint to the complainant within two (2) weeks of receiving the complaint
- b) Investigate the complaint and specify its proposed action in response to the complaint within three (3) months. If more time is needed to complete the investigation, the complainant and Olam Global Agri Pte. Ltd.'s certification body should be notified
- c) Take appropriate actions with respect to complaints and any deficiencies found in processes that affect conformity to the certification requirements
- d) Notify the complainant and Olam Global Agri Pte. Ltd.'s certification body when the complaint is considered to be successfully addressed and closed.

5.8. Issues relative to verification of Critical Control Points: Non-compliance

In the case of, despite all the controls and procedure, non-conforming products are detected after they have been sold and delivered, Olam Global Agri Pte. Ltd. shall undertake the following activities:

- a) Notify its certification body and all affected direct customers in writing within five business days of the non-conforming product identification, and maintain records of that notice
- b) Analyse causes for occurrence of non-conforming products, and implement measures to prevent their recurrence
- c) Cooperate with its certification body in order to allow the certification body to confirm that appropriate actions were taken to correct the non-conformity.

6. FSC®-CoC Logo Usage and Protection.

The FSC® logo shall be used in accordance with the standard FSC®-STD-50-001 V2-0. According to above standard, we will apply the FSC® trademarks only after we get our own FSC®-COC certificate number, no matter which ways we need to use the FSC® Trademarks and Labels. Furthermore, we will not use any FSC® trademarks to any promotion of our certified products until we have actual certified product sales at our end.

Olam Global Agri Pte. Ltd. will establish and maintain an up to date a register of all Logo use for on/off products. The use of logo of the relevant certification scheme is managed by the Management Representative and shall always comply with the standard FSC®-STD-50-001 V2.0. No logo use can take place without approval from the Management Representative and prior to any FSC® logo use, the Management Representative shall always seek approval from a FSC® accredited certification body.

We would use the FSC® Trademarks, Labels, Logo as described below:

- A. On-product use
 - FSC® labels to be used on the Packing & Packaging of logs and sawn timber
 - FSC® labels to be used on logs and sawn timber
- B. Off-product use
 - Use of the FSC® Trademarks on stationary, email signatures
 - To be used on sign boards of Olam Global Agri Pte. Ltd., Singapore
 - To be used on any pamphlet, literature, books, reports, or presentation made by Olam Global Agri Pte. Ltd.

[\(See Annex 13 – FSC® Logo use register\)](#)

Note: No FSC® label should be used on material nor documents in the case of the trade of FSC® CW material.

7. Records & Registers

Olam Global Agri Pte. Ltd. as well as marketing offices and outsourced entities shall maintain complete and up-to-date records to maintain a secure Chain of Custody.

We will retain records and reports, including purchase and sales documents, training records, volume summaries and trademark approvals during (5) five years.

We will record the following documents:

- Purchase and Sales Contracts
- Purchase and Sales Invoices
- Relevant Shipping Documentation (Bill of Lading/Specifications/Packing List, Certificate of Origin, Phyto-Sanitary Certificate)
- FSC® Material Suppliers Register
- FSC® Logo Use Register
- FSC® Product Group List
- Up to date FSC® Volume Report for purchase ad sales contracts
- Training Attendance Sheets

Olam Global Agri Pte. Ltd. has a computerized system for storage of documentation dated a year or older. Electronic Records are backed up monthly. These records are stored in hard copy, easily available and stored off site. Also, reports and records are easily extracted from our internal system under ORACLE – OPS.

8. Outsourcing

The system used for outsourcing work through entities remains **the transfer system** as the work implies handling of documentation without processing/production of the inputs. There will be no transfer of ownership of FSC® certified material to these companies.

LIST OF OUTSOURCING PARTNERSHIPS

Company details	Date of start	Date of end	FSC®	Type of operations

There is currently no ongoing outsourcing agreement.

Our certification body will be immediately informed with the names and contact details of any additional outsourcing organizations that Olam Global Agri Pte. Ltd. would wish to add.

[\(See Annex 14 – Chain of Custody Certification Outsourcing Agreement Example\)](#)

9. FSC Core Labour requirements and policy of association

In compliance with FSC STD-40-004 V3-1 section 7 and annex D, Olam Global Agri Pte. Ltd. has completed its self-assessment relation to the FSC Core Labour requirements. A digital copy of this document is kept on the company's server.

In compliance with FSC STD-40-004 V3-1 section 1.3, Olam Global Agri Pte. Ltd. has issued a self-declaration regarding the FSC-POL-01-004.

This self-declaration attests to the fact that Olam Global Agri Pte. Ltd. is committed to respect FSC's values.

[\(See Annex 15 – Self-declaration regarding FSC-POL-01-004\)](#)

A digital copy of this self-declaration is kept on the company's server and a physical copy is kept on Basel site.

10. Training

The Management Representative shall identify the training needs and arrange FSC® related training for new staff members.

The current Timber Team is competent in daily FSC® material documentation handling and understands their specific responsibilities in the control of the Chain of Custody. A separate training program was arranged on 20th July 2012 for all employees dealing with FSC® certified material who could not attend the session in Singapore. Every employee who joined the team since has been trained in Basel.

Antoine Briane did a refresher internal training course on the 28th of September 2016 to relevant employees of Olam Agri Basel AG. Attendants were asked to sign an attendance sheet after the course.

[\(See Annex 16 – Attendance Sheet – COC Certification training Report\)](#)

Antoine Briane did internal and individual to all employees who joined the Olam Agri Basel AG team. Olam Global Agri Pte. Ltd. registers training attendance sheets in hard copies as part of its procedure.

There should also be at least one meeting/training per year with each team to discuss of the current system and potential new updates.

Records of training and experience will be maintained and kept up to date for 5 years.

Annexes

Annex 1	Environment and Sustainability Policy
Annex 2	Health and Safety Policy
Annex 3	Letter of authorization
Annex 4	FSC® Product Group List
Annex 5	Supplier verification through www.fsc.info.org
Annex 6	Example of a purchase contract FSC® Material
Annex 7	Example of a sales contract FSC® Material
Annex 8	Example of a purchase invoice FSC® Material
Annex 9	Example of a Bill of Lading
Annex 10	Example of a Packing List / Specifications
Annex 11	Example of a Phyto-sanitary Certificate
Annex 12	Example of a Sales invoice FSC® Material “FSC 100% claim”
Annex 13	FSC® Logo use report form
Annex 14	Chain of Custody Certification Outsourcing Agreement Example
Annex 15	Attendance Sheet – CoC Certification training Report

Annex 1 Olam Global Agri Pte. Ltd.'s Environment and Sustainability

Policy



Environmental Sustainability Policy

Olam is committed to selecting and managing land responsibly, establishing landscape-level water management, and adapting to risks and opportunities for Olam and communities.

Our goals:

- Increase water use efficiency
- Minimise the impact of wastewater discharges
- Mitigate greenhouse gas emissions from Olam sites
- Reduce indirect land impacts from third-party farmers and suppliers
- Increase business resilience through adaptation.

To achieve these goals, we will:

- Assess relevant risks in our day-to-day supply-chain and direct operations, proposed operational changes, acquisitions and new ventures
- Select and manage land responsibly
- Establish integrated water resource management and encourage water stewardship
- Increase the efficiency of all resources used including fuel, energy, water and land
- Increase the proportion of renewable and non-fossil fuels and energy and the utilisation of by-products consumed in our direct operations
- Reduce any impacts arising from our business activities on the environment and biodiversity through process innovation, and waste elimination, reduction, reuse and recycling
- Implement appropriate climate smart agricultural practices in those supply-chains and direct operations identified as having current or future climate associated risks
- Conduct periodic environmental footprint reviews for all Olam's own operations and its key supply-chain activities
- Encourage and support our suppliers to improve the sustainability of their business
- Create a learning organisation where colleagues can share their successes and failures to drive improvement.

For the management and implementation of this and all policies, we will:

- Conduct our business with integrity and in compliance with the relevant laws of the countries in which we operate and in accordance with recognised international and national standards, guidelines and processes
- Require all levels of Olam management to be accountable for applying the policy in their business decisions
- Ensure all employees, business partners, contractors suppliers and visitors understand this Policy and their own responsibilities and accountabilities and receive appropriate training and support for success
- Establish strategies and management systems to create and prioritise measurable objectives and execute improvement plans that are aligned with our business goals and address our significant risks, impacts and opportunities
- Communicate and publically report meaningful and accurate information regarding our performance to demonstrate continual progress towards commitments made in our policies
- Regularly review this Policy for business alignment including 'Our Shared Values' and key stakeholder expectations.

A handwritten signature in black ink, appearing to read "Sunny George Vergheze".

Sunny George Vergheze
Group MD and CEO
Olam International Limited

Issue 2_WD5
01 April 2016
Document P-02



Health and Safety Policy

Olam is committed to providing a healthy and safe workplace for our employees, contractors and visitors.

Our vision of embedding a 'zero harm culture' is delivered through safety leadership and embodied in 'Our Shared Values'.

Our goal:

- Deliver a world-class safety programme across all Olam facilities, with workplace risk management as a core capability.

To achieve these goals, we will:

- Promote consultation between management, employees, contractors and interested parties on those matters affecting safety and health in the workplace
- Form facility safety committees chaired by the Facility Manager to identify, assess and eliminate risk or implement risk mitigation actions based on risk prioritisation
- Implement a safety management programme based on safe systems of work, including Risk Assessment and Mitigation, Job Safety Analysis and Permit to Work
- Establish measurable health and safety goals and targets supported by processes to accurately measure, trend and report our progress
- Maintain robust conformance assessments using internal and external auditors.

For the management and implementation of all policies, we will:

- Conduct our business with integrity and in compliance with the relevant laws of the countries in which we operate and in accordance with recognised international and national standards, guidelines and processes
- Require all levels of Olam management to be accountable for applying the policy in their business decisions
- Ensure all employees, business partners, contractors suppliers and visitors understand this Policy and their own responsibilities and accountabilities and receive appropriate training and support for success
- Establish strategies and management systems to create and prioritise measurable objectives and execute improvement plans that are aligned with our business goals and address our significant risks, impacts and opportunities
- Communicate and publically report meaningful and accurate information regarding our performance to demonstrate continual progress towards commitments made in our policies
- Regularly review this Policy for business alignment including 'Our Shared Values' and key stakeholder expectations.

A handwritten signature in black ink that reads "Sunny George Verghese".

Sunny George Verghese
Group MD and CEO
Olam International Limited

Issue 2_WD5
01 April 2016
Document P-03

Annex 3 Letter of Authorization




Letter of Authorization

Singapore, 19/11/2018

To Whomsoever it may concern:

We hereby appoint Antoine Briane to be the company's Management Representative of the FSC-COC system. He will have overall responsibility for the organization's compliance with all applicable requirements of this standard.




For Olam International Limited,
Darshan Raiyani – Global Head – Wood Products

Olam International Limited
OLAM INTERNATIONAL LTD, 7 STRAITS VIEW, MARINA ONE, EAST TOWER, #20-01, SINGAPORE 0189936
T +65 6339 4100 | F +65 6339 9755 | www.olamgroup.com

Annex 4 FSC® Product Group List

The following list contains the species with a potential interest in trade. It is covering the different products (W1.1, W5.1, W5.3, W9.1, W9.6, W13.5)

Specie (common name)	Specie (scientific name)		
		Longhi beg	Gambeya beguei
		Longhi perp	Gambeya perpulchra
Acajou	Khaya anthotheca	Mambodé	Detarium macrocarpum
Aiélé	Canarium schweinfurthii	Manilkara / Owom	Manilkara spp.
Ako	Antiaris toxicaria	Mukulungu	Autranella congolensis
Albizia	Albizia spp	Niové	Staudtia gabonensis
Angueuk	Ongokea gore	Ohia	Celtis mildbraedii
Aniégré	Aningeria robusta	Olon	Zanthoxylum heitzii
Avodiré	Turraeanthus africanus	Onzabili	Antrocaryon klaineana
Ayous	Triplochiton scleroxylon	Padouk	Pterocarpus soyauxii
Azobé	Lophira alata	Pao rosa	Bobgunnia (= Swartzia) fistuloides
Bilinga	Nauclea diderrichii	Sapelli	Entandrophragma cylindricum
Bodioa	Anopyxis klaineana	Sipo	Entandrophragma utile
Bossé clair	Guarea cedrata	Tali	Erythrophleum ivorense
Bubinga	Guibourtia demeusei	Tali	Erythrophleum suaveolens
Dabema	Piptadeniastrum africanum	Tchitola	Prioria oxyphylla
Diania GF	Celtis adolfi-friderici	Tiama	Entandrophragma angolense
Diania PF	Celtis tessmannii	Wengué	Millettia laurentii
Dibétou	Lovoa trichilioides	Okoumé	Aucoumea klaineana
Doussié	Afzelia bipindensis	Gombe	Didelotia africana
Ebène	Diospyros crassiflora	Okan	Cylicodiscus gabunensis
Essessang	Ricinodendron heudelotii	Ovengkol	Guibourtia ehie
Etimoé	Copaifera mildbraedii	Andoung	Aphanocalyx hedinii
Eyong	Eribroma oblongum	Bete	Mansonia altissima
Fromager	Ceiba pentandra	Framire	Terminalia ivorensis
Iatandza	Albizia ferruginea		
Ilomba	Pycnanthus angolensis		
Iroko	Milicia excelsa		
Kanda	Beilschmiedia (African B. spp.)		
Kapokier	Bombax buonopozense		
Kosipo	Entandrophragma candollei		
Kotibé	Nesogordonia papaverifera		
Koto	Pterygota spp.		
Lati	Amphimas pterocarpoides		
Limballi	Gilbertiodendron dewevrei		
Limballi	Terminalia superba		
Longhi abam	Gambeya lacourtiana		


Annex 5 Supplier verification through www.fsc.info.org

app.powerbi.com/view?r=eyJrIjoib2U3NGMyNWUzZTAxNS00MzVhLWExNmMtOThhZjdiYjQ4MWNkIiwidCI6IjEyNGU2OWRiLWVmNjUtNDk2Yi05NmE5LTVhNTZiZWxZDI5MSlmiOjI9

WordReference W Wikipédia Convertisseur de de... Google Traduction Marine Traffic Lecteur web Spotify YouTube Gmail Maps Translate LCA perso Comparateur de vol... Convert PDFs onlin... Ma journée - To Do

FSC CERTIFICATES PUBLIC DASHBOARD

2022-05-04 11:02:43
Data last updated



Search by License Code, Certificate Code, Organization Name, Local Name or State/Province

congolaise

Certificate Type

- COC
- FM/COC

Role

- Certificate holder

Certificate Status

- Terminated
- Valid

Certification Body

- SGS
- SGSCH

Country/Region

Rechercher

- CONGO, THE R...

Tree Species

Rechercher

- Sélectionner tout
- Afzelia bipindensis
- Albizia ferruginea
- Albizia spp.
- Amphimas ferrugineus AND A. pterocar...

Product

Rechercher

- Sélectionner tout
- W1 Rough wood
- W11 Wood for construction
- W12 Indoor furniture
- W13 Outdoor furniture and gardening
- W16 Household articles
- W18 Other manufactured wood products
- W19 Other wood products

License	Certificate Code	Cert Status	CW DDS	Date From	Valid To	Organization Name	Role	Site status	State/Province	Country/Region
FSC-C104637	SGS-FM/COC-008483	Valid	No	2022-02-10	2026-08-09	Congolaise Industrielle des Bois (CIB)	Certificate holder	Valid		CONGO, THE REPUBLIC OF
FSC-C128941	SGS-FM/COC-010641	Valid	No	2022-02-10	2026-02-09	Congolaise Industrielle des Bois (CIB)	Certificate holder	Valid		CONGO, THE REPUBLIC OF
FSC-C014998	SGS-FM/COC-004705	Valid	No	2022-02-08	2026-02-07	Congolaise Industrielle des Bois (CIB)	Certificate holder	Valid		CONGO, THE REPUBLIC OF
FSC-C005457	SGSCH-COC-002697	Valid	No	2021-10-13	2025-10-12	Congolaise Industrielle des Bois (CIB)	Certificate holder	Valid		CONGO, THE REPUBLIC OF
FSC-C156094	SGS-FM/COC-011928	Valid	No	2020-03-26	2025-03-25	Congolaise Industrielle des Bois (CIB)	Certificate holder	Valid		CONGO, THE REPUBLIC OF

Annex 6 Example of a purchase contract FSC® Material



PURCHASE DATE : 19 January 2022
ORDER NO. : 22/P/00370/A DKD11959ACA

BUYER / ACHETEUR : OLAM GLOBAL AGRI PTE LTD,
7 STRAITS VIEW, MARINA ONE EAST TOWER, #20-01,
SINGAPORE 018936

SELLER / VENDEUR : CONGOLAISE INDUSTRIELLE DES BOIS
BP 41 OUESSO CONGO

PRODUCT / PRODUIT : ENV. 28 M3 (1X40') AVIVES ACAJOU (KHAYA ANTHOTHECA)
PROVENANCE: REPUBLIQUE DU CONGO

FSC 100%
 PRODUCT GROUP FROM WELL-MANAGED FORESTS, PRODUCED IN CONFORMITY
 WITH THE PRINCIPLES AND CRITERIA OF THE FOREST STEWARDSHIP COUNCIL AND
 OTHER CONTROLLED SOURCES. CERTIFICATION CODE CIB: SGSCH-COC-002697. VALID
 UNTIL 12TH OF OCTOBER 2025. THIS TIMBER (PRODUCT) IS ALSO PRODUCED IN
 CONFORMITY WITH THE DECLARATION OF COMMITMENTS BY CIB (NOVEMBER 2006).
 ATTENTION
 SVP. NE JAMAIS OMETTRE DE PORTER DANS LES DOCUMENTS (CONTRAT,
 SPECIFICATION, FACTURE, BILL OF LADING) LE CODE DE LA CERTIFICATION: **SGSCH-
 COC-002697**

QUALITY / QUALITE : F.A.S., KD - 14% (+/- 2%)
QUANTITY / QUANTITE : 28 CBM
PRICE / PRIX :
 LE PRIX S'ENTEND EUR/M3

PACKING / DESCRIPTION : EPAISSEUR: SELON LE PACKING LISTE
 LARGEURS: SELON LE PACKING LISTE
 LONGUEURS: SELON LE PACKING LISTE

MESURAGE: SYSTEME METRIQUE
 MARQUAGE: FEUILLE VERTE « CIB » + FSC 100%
 PRODUCTION: STOCK PARCEL.

SHIPMENT / EMBARQUEMENT : JANVIER 2022 / FEVRIER 2022,
 EN CONTENEUR (1X40') AVEC CMA CGM.

PAYMENT TERM / REGLEMENT : 100% PAYMENT IN ADVANCE

PORT OF SHIPMENT / PORT OF CHARGEMENT : KRIBI (CAMEROUN)

PORT OF DISCHARGE / PORT OF DESTINATION : VALENCIA (ESPAGNE)

SPECIAL CONDITIONS / MENTIONS SPECIALES : CONNAISSEMENTS: A ETABLIR A ORDRE, SANS RESERVE ET A MARQUER "FRET
 PAYABLE PAR TONEWOODS SL."
 PAYEUR DU FRET: TONEWOODS SL.

NOTIFY:
 TONEWOODS SL.
 VILLAS DEL BOSQUE 17
 46370 – CHIVA
 SPAIN.

AUTRES DOCUMENTS:
 LES CERTIFICATS PHYTOSANITAIRE, D'ORIGINE ET EUR 1 DOIVENT ETRE EN MAINS
 DE OLAM AVANT L'ARRIVEE DU NAVIRE AU PORT DE DESTINATION.

REMARQUE:
 A FACTURER A: (= FACTURE + COPIES SPECI + B/L E-MAIL)
 OLAM GLOBAL AGRI PTE LTD.,
 7 STRAITS VIEW, MARINA ONE; EAST TOWER, #20-01; SINGAPORE 018936

1 of 2

Olam Global Agri Pte Ltd,
 7 Straits View, #20-01 Marina One East Tower, Singapore 018936
 Tel. 65 6339 4100 | Fax. 65 6339 9755 | www.olamgroup.com

Reg. No. 202110111.H.

Annex 7 Example of a sales contract FSC® Material



SALES DATE	: 19 January 2022
ORDER NO.	: 22/S/00303/A DKD11959ACA.


BUYER / ACHETEUR	: TONEWOODS S.L. VILLAS DEL BOSQUE 17 ES - 46370 CHIVA SPAIN ES-46370
SELLER / VENDEUR	: OLAM GLOBAL AGRICULTURE PTE LTD., 7 STRAITS VIEW, MARINA ONE EAST TOWER, #20-01, SINGAPORE 018936
PRODUCT / PRODUIT	: ABT. 28 M3 (1X40) ACAJOU SAWN TIMBER (KHAYA ANTHOTHECA) COUNTRY OF ORIGIN: REPUBLIC OF CONGO FSC 100% OLAM FSC CERTIFICATE NO. SGSJK-COC-002926. PRODUCT GROUP FROM WELL-MANAGED FORESTS, PRODUCED IN CONFORMITY WITH THE PRINCIPLES AND CRITERIA OF THE FOREST STEWARDSHIP COUNCIL AND OTHER CONTROLLED SOURCES.
QUALITY / QUALITE	: F.A.S., KD - 14% (+/- 2%)
QUANTITY / QUANTITE	: 28 CBM
PRICE / PRIX	: THE PRICE IS QUOTED IN EUR/M3
PACKING / DESCRIPTION	: THICKNESS: AS PER PACKING LIST WIDTHS: AS PER PACKING LIST LENGTH: AS PER PACKING LIST MEASUREMENT: METRIC SYSTEM MARKING: GREEN LEAF « CIB » + FSC 100%.
SHIPMENT / EMBARQUEMENT	: JANUARY 2022 / FEBRUARY 2022, IN (1X40') CONTAINER WITH CMA CGM.
PAYMENT TERM / REGLEMENT	: CASH AGAINST DOCUMENTS AT SIGHT 100% PAYMENT AGAINST COPY OF DOCUMENTS. PAYMENT TO BE MADE AT SIGHT OF RECEIVING COPY DOCUMENTS AND ORIGINAL DOCUMENTS TO BE SENT THEREAFTER.
PORT OF SHIPMENT / PORT OF CHARGEMENT	: KRIBI (CAMEROON)
PORT OF DISCHARGE / PORT OF DESTINATION	: VALENCIA (SPAIN)
OTHER CONDITIONS / AUTRES CONDITIONS	

1 of 2

Olam Global Agri Pte Ltd.,
7 Straits View, #20-01 Marina One East Tower, Singapore 018936
Tel. 65 6339 4100 | Fax. 65 6339 9755 | www.olamgroup.com

Reg. No. 202110111-H.

Annex 8 Example of a purchase invoice FSC® Material



CONGOLAISE INDUSTRIELLE DES BOIS

OUESO LE : 12/03/ 2022

FACTURE N° : C118/22 **DOIT :** OLAM INTERNATIONAL LTD
 7 Straits View, Marina One
 East Tower, #20-01
 Singapore 018936

CODE..... OIL N° OIL..... 22/P/00370 - 22/S/00303
 CONTRAT..... DKD 11959 ACA
 ESSENCE..... ACAJOU (KHAYA ANTHOTHECA) A A
 PORT D'EMBARQUEMENT..... KRIBI
 PORT DE DESTINATION..... VALENCE
 PAYS DE DESTINATION..... ESPAGNE
 CODE CERTIFICAT FSC®..... **SGSCH-COC-002697**
 DOSSIER..... C0116/22
 NAVIRE..... PORT GDYNIA
 LE..... 08/03/ 2022 BL N° : DLO0148842


N° S. CIF	NBRE FDX	QUALITE	ESS.	DESIGNATION	NBRE PCES	VOLUME M3	P.U. FOB EURO	PRIX TOTAL EURO
S0307/22	18	FAS ST KD BR DI	ACA	25 X 110 + X 2,10 +	1236	25,094		
S0308/22	1	FAS ST KD BR DI	ACA	28 X 100 + X 3,00	95	1,427		
S0309/22	1	FAS ST KD BR DI	ACA	32 X 110 + X 2,20	46	0,717		
S0310/22	1	FAS ST KD BR DI	ACA	38 X 110 + X 2,20	20	0,335		
S0311/22	1	FAS FX KD BR DI	ACA	50 X 150 X 2,20	21	0,347		

22 COLIS / ORIGINE : REP. DU CONGO

CONTRE VALEUR EN CFA
ARRETEE LA PRESENTE FACTURE A LA SOMME DE :

LA DIRECTION

All products in this document have **FSC® 100% status**. Product from well-managed forests.
 This timber (product) is produced in conformity with the Principles and Criteria of the Forest Stewardship Council®.
 Certification code CIB: SGSCH-COC-002697. Valid until 12 October 2025. This timber (product) is also produced in conformity with the Declaration of Commitments by CIB (November 2020).




Congolaise Industrielle des Bois (CIB)
 I.A. avec Conseil d'Administration au capital de 10.021.500.000 FCFA
 (CCM : 05 B 179 CNSS N° 7074P
 I.U. : M20005110000375139

BRAZZAVILLE
 Sis MPILA à côté de la centrale thermique
 B.P. : 145

Commune de POKOLA
 Base vie - Site industriel
 B.P. : 41 OUESO
 Tél.:(242) 06 900 14 30

Régime d'imposition : Réel / Résidence fiscale : UGE BRAZZA / www.olamonline.com / cibpokola@cibpokola.com - accueil.administration@cibpokola.com
 Comptes bancaires: RIB LCB : CG39 3001 2001 0120 9551 0110 125 - RIB CDCo: CG39 3001 1000 2020 0401 6300 036

Annex 9 Example of a Bill of Lading

SHIPPER CONGOLAISE INDUSTRIELLE DES BOIS BR 41 QUESSO, CONGO TEL: 00 81 761 880 724		ORIGINAL BILL OF LADING		VOYAGE NUMBER 0BQBIN1MA BILL OF LADING NUMBER DLO0148842	
CONSIGNEE TO ORDER		EXPORT REFERENCES			
NOTIFY PARTY: Carrier not to be responsible for failure to notify TONEWOODS SL VIELAS DE BOSQUE 17 46370 - CHIVA SPAIN					
		CARRIER: CMA CGM Société Anonyme au Capital de 234 988 330 Euros Head Office: 4, quai d'Arenç - 13002 Marseille - France Tel: (33) 4 88 91 90 00 - Fax: (33) 4 88 91 90 95 562 024 422 R.C.S. Marseille			
PRE-CARRIAGE BY	PLACE OF RECEIPT	FREIGHT TO BE PAID AT	NUMBER OF ORIGINAL BILLS OF LADING		
VESEL	PORT OF LOADING	BARCELONA	THREE (3)		
PORT GYNYA	KRIBI	VALENCIA	FINAL PLACE OF DELIVERY*		
MARKS AND NOS CONTAINER AND SEALS	NO AND KIND OF PACKAGES	DESCRIPTION OF PACKAGES AND GOODS AS STATED BY SHIPPER SHIPPER'S LOAD, STOW AND COUNT, SAID TO CONTAIN	GROSS WEIGHT CARGO	TARE	MEASUREMENT
			KGS	KGS	CBM
AFBU/068057 REAL #4280740	1 x 40HC	22 BUNDLES	13962.000	3870	27,920
N° CIB: C0116		ACAJOU BUNDLES 1418 PIECES KHAYA ANTHROTHICA CONTRAT: DKD 11959-ACA PURCHASE ORDER: 22/P/00370/A CONTRACT ORDER: 22/S/00303 ORIGINE: CONGO HS CODE: 440729 FREIGHT PAYABLE BY TONEWOODS SL. SGSCH-COC-002697 FEUILLE VERTE "CIB" + FSC 100%			
		CIB CONGO Shipped on Board PORT GYNYA 10-MAR-2022 CMA CGM CAMEROUN As agents for the Carrier			
Weight in Kgs. Total: 1 CONTAINER(S)		Sheet 1 of 2	13962.000	3870	27.920
ABOVE PARTICULARS DECLARED BY SHIPPER. CARRIER NOT RESPONSIBLE.					
ADDITIONAL CLAUSES					
1. Consignee, port of destination, expenses and responsibility 2. FSC: All destinations payable by Merchant as per Incoterms (entire) 3. For the purpose of the present carriage, clause 14(2) shall exclude the application of the York-Antwerp Rules 2004. 4. Demurrage and detention shall be calculated and paid as per general tariff available on the web site: www.cma-cgm.com or any other website of CMA CGM Agency. However if special time conditions are granted, these rates shall apply as per general tariff and shall start from the day following the last free day. 5. The declaration of cargo weight and dangerous goods, port workers and assistance safety: Your cargo may be weighed at any place and time of call and any mis-declaration will expose you to claims for all losses, expenses or damages which may be suffered by freight carriage. 6. The Shipper acknowledges that the Carrier may be liable for the goods identified in this Bill of Lading on the basis of any vessel and in the knowledge of this Bill of Lading the Merchant (including the shipper, the consignee and the holder of the bill of lading, as the case may be) confirms its express acceptance of all the terms and conditions of this Bill of Lading and expressly confirms its unconditional and irrevocable consent to the possible carriage of the goods on the deck of any vessel. 7. The Merchant is responsible for retaining any empty container, with interior clean, free of any dangerous goods, poisons, labels or markings, at the designated place, and within 90 days following the date of release, after which the container shall be construed as lost. The Merchant shall be liable to indemnify the Carrier for any loss of expense whatsoever arising out of the foregoing, including but not limited to liquidated damages equivalent to the sound market value - or the depreciated value - of the Carrier's container lessor. The Carrier is entitled to collect a deposit from the Merchant at the time of release of the container which shall be refunded as security for payment of any sums due in the amount of payment of all demurrage and detention and/or container indemnity as referred above. 8. In the event that this Bill of Lading is a Paperless Bill of Lading, it shall be governed by the Terms and Conditions available on the CMA CGM website (http://www.cma-cgm.com/products) and any amendments thereto, which the Merchant has read and accepted. The delivery of the goods under a Paperless Bill of Lading shall be made to the Consignee after the Paperless Bill of Lading is received by the carrier from the shipper in apparent good order and condition (unless otherwise noted herein) the total number or quantity of Containers or other packages or units indicated above stated by the shipper to comprise the cargo specified above for transportation subject to all the terms hereof (including the terms on page one) from the place of receipt to the port of loading, whichever is applicable, to the port of discharge or the place of delivery, whichever is applicable. Delivery of the Goods will only be made on payment of all freight and charges, on presentation of this document (duly endorsed) to the Carrier, by or on behalf of the holder, the rights and liabilities arising in accordance with the terms hereof shall without prejudice to any rule of common law or statute remaining being binding upon the shipper, holder and carrier, become binding in all respects between the Carrier and holder as though the contract contained herein or evidenced hereby had been made between them. All claims and disputes arising between the Carrier and the Merchant in relation with the contract of Carriage evidenced by this Bill of Lading shall exclusively be brought before the Tribunal de Commerce de Marseille and the other Courts shall have jurisdiction with regards to any such claim or action. Notwithstanding the above, the Carrier is also entitled to bring the claim or action before the Court of the place where the defendant has his registered office. In witness whereof three (3) original Bills of Lading, unless otherwise stated above, have been issued, one of which being accomplished, the others to be void. *OTHER TERMS AND CONDITIONS OF THE CONTRACT ON PAGE ONE)					
PLACE AND DATE OF ISSUE: DUBAÏ 10 MAR 2022		SIGNED FOR THE CARRIER CMA CGM S.A. BY: CMA CGM CAMEROUN as agents for the carrier CMA CGM S.A.			
SIGNED FOR THE SHIPPER: *APPLICABLE ONLY WHEN THIS DOCUMENT IS USED AS A COMBINED TRANSPORT BILL OF LADING					

Annex 10 Example of a Packing List / Specifications

CIB
 B.P. 41 OUESSO
 CONGO

CODE..... OIL SPA Le, 26/01/2022

CLIENT : OLAM INTERNATIONAL LTD
 7 Straits View, Marina One
 East Tower, #20-01
 Singapore 018936

CONTRAT DKD 11959 ACA

ESSENCE ACAJOU (KHAYA ANTHOTHECA)

N° OIL 22/P/00370 - 22/S/00303

CODE CERTIFICAT FSC®..... **SGSCH-COC-002697**

Container :
 Type :

RECAPITULATIF

N° Dossier: RS0117/22 DU : 26/01/2022 N° Transmission

N° Specif	Essence	Qualite	Nb Fdx	Section(s) mm	Longueur(s)	Nbre Pces	Volume M3
S0307/22	ACA	FAS	18	25 X 110 +	2,10 et plus	1236	25,094
S0308/22	ACA	FAS	1	28 X 100 +	3,00 fixes	95	1,427
S0309/22	ACA	FAS	1	32 X 110 +	2,20 fixes	46	0,717
S0310/22	ACA	FAS	1	38 X 110 +	2,20 fixes	20	0,335
S0311/22	ACA	FAS	1	50 X 150	2,20 fixes	21	0,347
22 FDX. ORIGINE : REP. DU CONGO						1.418	27,920

CHEF DE SERVICE



Mesmin
NGOUELE-ANDAYA



All products in this document have **FSC® 100% status**. Product from well-managed forests.
 This timber (product) is produced in conformity with the Principles and Criteria of the Forest Stewardship Council®.
 Certification code CIB: SGSCH-COC-002697. Valid until 12 October 2025. This timber (product) is also produced in conformity with the Declaration of Commitments by CIB (November 2020).



Annex 11 Example of a Phyto-sanitary Certificate

MINISTÈRE DE L'AGRICULTURE
DE L'ELEVAGE ET DE LA PÊCHE

DIRECTION GÉNÉRALE DE
L'AGRICULTURE

DIRECTION DE LA PROTECTION
DES VÉGÉTAUX

DEPARTEMENT DE LA SANGHA

170
N° /MAEP/DGA/DPV-DS/22 *Pf*

RÉPUBLIQUE DU CONGO
Unité-Travail-Progress

CERTIFICAT PHYTOSANITAIRE

L'Organisation de la Protection des Végétaux de : LA RÉPUBLIQUE DU CONGO

A l'Organisation de la Protection des Végétaux de : ESPAGNE

1. Description de l'envoi

Nom et adresse de l'exportateur : CIB POKOLA BP 41 OUESSO REP DU CONGO

Nom et adresse déclarés du destinataire : TONEWOODS SL. VILLAS DEL BOSQUE 17 46370-CHIVA SPAIN.

Nombre et nature des colis : 22 FDX DES BOIS SCIES DE ACAJOU (ØKD 11959 ACA RS0117/22)

Marque de colis : CIB-OLAM

Lieu d'origine : LA RÉPUBLIQUE DU CONGO (SANGHA / POKOLA)

Moyen de transport déclaré : VEHICULES ET NAVIRES

Point d'entrée déclaré : ESPAGNE

Nom du produit et quantité déclarée : ACAJOU (27,920 M3)

Nom botanique des plantes : KHAYA ANTHOTHECA

2. Déclaration de certification

Il est certifié que les végétaux ou produits végétaux décrits ci-dessus ont été inspectés suivant des procédures officielles appropriées et estimés exempts d'organismes de quarantaine comme spécifié par la partie contractante importatrice ; et qu'ils sont jugés conformes aux exigences phytosanitaires en vigueur dans la partie contractante importatrice, y compris à celles concernant les organismes réglementés non de quarantaine

3. Déclaration supplémentaire

4. Traitement de désinsectisation et/ou de désinfection

Date : 26-JAN-22 traitement : TRAITEMENT CHIMIQUE... produit chimique (matière active) SARPALO (THIACLOPRID-BUTYL CARBAMATE-PROPICONAZOLE & TEBUCONAZOLE AQUA+ GEREMULE... durée 1 ASPERSION TOUS LES 6 JOURS JUSQU'A EMBARQUEMENT... concentration

Renseignements complémentaires : EMBALLAGES EN BOIS CONFORME A LA NORME NIMP 15 N° : IPPC/CG 500 (HT)

Délivré à : POKOLA le : 27 JAN 2022

Le Chef de Poste de

Contrôle Phytosanitaire de : POKOLA

(Nom et signature du chef de poste)

(Nom et signature du chef de poste)



May
Franck Yannick MATOUTI KODLAVIF
(Nom et signature du fonctionnaire autorisé)

Annex 12 Example of a Sales invoice FSC® Material “FSC 100% claim”



14 March 2022

TONWOODS S.L.
VILLAS DEL BOSQUE 17
ES - 46370 CHIVA
SPAIN
ES-46370

COMMERCIAL INVOICE NO : 03227/03/2022

22 BDLS ACAJOU – 27,920 CBM
(KHAYA ANTHOTHECA)

COUNTRY OF ORIGIN: REPUBLIC OF CONGO
100% FSC
OLAM FSC REGISTRATION CODE: SGNHK-COC-002926

B/L N° DLO0148842 DATED : 03.03.2022
01 X 40' CONTAINER N° APHU7065957

FOB DOUALA

OUR O/C REFERENCE	:	22/S/00303/A/01	
YOUR REFERENCE	:	DKD11959ACA	
PORT OF SHIPMENT	:	KRIBI	
PORT OF DISCHARGE	:	VALENCIA	
PAYMENT TERM	:	CASH AGAINST DOCUMENTS AT SIGHT 100% PAYMENT AGAINST COPY OF DOCUMENTS. PAYMENT TO BE MADE AT SIGHT OF RECEIVING COPY DOCUMENTS AND ORIGINAL DOCUMENTS TO BE SENT THEREAFTER.	
VESSEL NAME	:	PORT GDYNIA	
B/L DATE	:	08 MARCH 2022	
B/L NUMBER	:	DLO0148842	
OUR BANK REFERENCE	:	03227/03/2022	
PAYABLE	:	Beneficiary Name	: OLAM GLOBAL AGRI PTE LTD.,
		Account Number	: CH02 0023 3233 1169 1970 P
		Beneficiary Bank	: UBS SWITZERLAND AG
		Beneficiary Bank Swift Code	: UBSWCH2H80A
		Beneficiary Bank Address	: BAHNHOFSTRASSE 45, P.O. BOX 8098 ZÜRICH SWITZERLAND

For OLAM GLOBAL AGRI PTE LTD.,

AUTHORISED SIGNATORY



Olam Global Agri Pte Ltd.
7 Straits View, #20-01 Marina One East Tower, Singapore 018936
Tel: 65 6339 4100 | Fax: 65 6339 9755 | www.olamgroup.com

Reg. No. 202110111-H.

Annex 13 FSC® Logo use report form

FSC Logo Use / FSC Trademark Register

Date	Logo Usage	Auditors' approval	Date of Approval	Comments

Annex 14 Chain of Custody Certification Outsourcing Agreement

Example



CHAIN OF CUSTODY CERTIFICATION OUTSOURCING AGREEMENT

TT Timber International AG, Basel, Wood Products
Olam Group
Backoffice Switzerland
Aeschengraben 6
CH-4051 Basel
Switzerland
Phone: +41/61 205 39 40

Re: Chain of Custody Contractor Agreement

As part of our chain of custody („CoC“) procedures we are required to have an agreement in place with all outsourced contractors with whom we work. We would appreciate if you could confirm your agreement to the following by signing and returning a copy of this letter.

We, the contractor, hereby declare that:

- 1.) We have received a copy of the relevant section of Olam International Ltd.'s CoC procedures and are operating in compliance with them.
- 2.) We agree to allow the relevant CoC accredited Certification body to audit our operation if required
- 3.) We will ensure, that certified material supplied by Olam International Ltd. can be tracked and controlled and cannot be mixed during handling of documents
- 4.) We will keep records of goods received, goods dispatched and delivery documentation associated with all certified material processed under this agreement.
- 5.) We will not outsource any procedure without the prior agreement of Olam International Ltd., should this be necessary, the outsourced location will need to be added to Olam International Ltd.'s CoC registration and all relevant procedures adhered to.
- 6.) We shall not use the CoC scheme logos (FSC) in relation to our processing of goods under this agreement unless specifically instructed by Olam International Ltd. to the contrary

Yours sincerely

I confirm that TT Timber International AG, Basel, wood products accepts the above terms in addition to the standard terms of business of Olam International Ltd.

Signed

Name

J.W.M. Hunj

Dated

Basel, 09.12.2014

Olam International Limited
9 Temasek Boulevard #11-02 Suntec Tower Two Singapore 038989
Tel 65 6339 4100 Fax 65 6339 9755 www.olamonline.com Reg. No. 199504676-H

Annex 15 Self-declaration regarding FSC-POL-01-004



Olam Agri Pte. Ltd.
7 Straits View,
Marina One East Tower #20-01
Singapore

T: +61 61 205 39 44
E: wood@olamagri.com

Singapore,
May 12th, 2022

Self-declaration regarding FSC-POL-01-004

The signing Organization is associated with the Forest Stewardship Council A.C., Oaxaca, Mexico, or one of its subsidiaries or affiliates (hereinafter: FSC) by being either a member of or having a contractual relationship with FSC. Hereby the signing Organization explicitly states that it has read and understood the "Policy for the Association of Organizations with FSC" as published under www.fsc.org. This policy stipulates FSC's position with regards to unacceptable activities by organizations and individuals which already are or would like to be associated with FSC as well as the mechanism for disassociation.

In light of the above, the Organization explicitly agrees currently and in the future, as long as the relationship with FSC exists, not to be directly or indirectly involved in the following unacceptable activities:

- a) Illegal logging or the trade in illegal wood or forest products;
- b) Violation of traditional and human rights in forestry operations;
- c) Destruction of high conservation values in forestry operations;
- d) Significant conversion of forests to plantations or non-forest use;
- e) Introduction of genetically modified organisms in forestry operations.

In addition, the signing Organization recognizes that the principles established by the International Labor Organization through the 1998 Declaration on Fundamental Principles and Rights at Work (the "Principles") serve to guide governments in the protection of the basic rights of workers without defining a uniform path for every nation to follow. Based upon these Principles, and consistent with applicable national law, rights, regulations, and administrative/judicial rules and procedures, the signing Organization shall respect:

- a) Freedom of association and the effective recognition of the right to collective bargaining;
- b) The elimination of all forms of forced or compulsory labor;
- c) The effective abolition of child labor; and
- d) The elimination of discrimination in respect of employment and occupation.

For Olam Global Agri Pte. Ltd.,

Darshan Raiyani
President and Global Head
Wood products and Gabon plantations

Olam Global Agri Pte. Ltd. | Reg. No. 20221011H

Annex 16 Attendance Sheet – CoC Certification training Report



Chain of Custody Training Report

Antoine Briane, Representative of the FSC-COC did today (28.09.2016) a refresher internal training course to relevant employees in TT Timber International AG, Basel on:

FSC Standard for Chain of Custody Certification

After attending the course, please kindly sign below for training report purposes and send it to us back for our records.

Employee	Position	Signature
C. Ferreira	sales assistant	
S. Samandary	sales assistant	
V. Hodzic	sales assistant	
V. Buchs	adm. assistant	

Olam International Limited
Signature:

Olam International Limited
9 Temasek Boulevard, #11-02 Suntec Tower 2, Singapore 038989
T +65 6339 4100 | F +65 6339 9755 | www.olamgroup.com

Annex 17 CIB's FSC®-COC traceability procedures

